

# THE FUTURE OF MEDICINE: AI'S ROLE IN HEALTHCARE INNOVATION

GANESH SAI KOPPARTHI  
INDEPENDENT RESEARCHER

---

## ABSTRACT

Artificial Intelligence (AI) is rapidly transforming the healthcare industry by introducing innovative technologies that improve diagnostics, treatment planning, patient monitoring, and healthcare management. The future of medicine is increasingly shaped by AI-driven systems capable of analyzing large volumes of medical data with greater speed, accuracy, and efficiency than traditional healthcare approaches. AI technologies such as machine learning, deep learning, natural language processing, robotics, and predictive analytics are enabling healthcare professionals to make more informed clinical decisions while enhancing patient outcomes and operational performance. One of the most significant applications of AI in healthcare innovation is medical diagnostics. AI-powered systems can analyze X-rays, CT scans, MRI images, pathology reports, and laboratory data to detect diseases such as cancer, cardiovascular disorders, diabetes, and neurological conditions at earlier stages. Deep learning algorithms trained on large healthcare datasets improve diagnostic accuracy and reduce human error. Predictive analytics also helps healthcare providers identify disease risks and implement preventive treatment strategies. AI is transforming patient care through intelligent virtual assistants, telemedicine platforms, wearable health devices, and remote patient monitoring systems. These technologies provide continuous healthcare support, improve patient engagement, and increase healthcare accessibility, particularly in remote and underserved areas. AI-assisted robotic surgeries and personalized medicine approaches are also improving treatment precision and recovery outcomes. Furthermore, AI accelerates pharmaceutical research and drug discovery by analyzing molecular structures and predicting treatment effectiveness. Despite these benefits, AI adoption in healthcare introduces several challenges, including data privacy concerns, ethical issues, algorithmic bias, lack of transparency, and regulatory limitations. Healthcare organizations must establish responsible governance frameworks to ensure safe and equitable AI implementation. Human oversight remains essential because AI technologies are intended to support healthcare professionals rather than replace clinical expertise and empathy. This research article examines the role of AI in shaping the future of medicine and healthcare innovation. The study explores AI technologies, applications in diagnostics and patient care, benefits, challenges, case studies, and future trends. The findings indicate that AI has the potential to revolutionize healthcare by creating more efficient, personalized, accessible, and patient-centered medical services. However, responsible implementation and ethical management are critical for maximizing the benefits of AI-driven healthcare innovation.

**KEYWORDS:** Artificial Intelligence, Healthcare Innovation, Medical Diagnostics, Machine Learning, Patient Care

---

## 1. INTRODUCTION

The healthcare industry is undergoing significant transformation due to advancements in digital technologies and increasing global healthcare demands. Artificial Intelligence (AI) has emerged as one of the most important technologies driving innovation in modern medicine. AI refers to computer systems capable of performing tasks that typically require human intelligence, such as learning, reasoning, problem-solving, and decision-making. In healthcare, AI technologies are increasingly used to improve diagnostics, treatment planning, patient monitoring, healthcare management, and medical research.

Healthcare systems generate enormous amounts of data through electronic health records (EHRs), laboratory reports, medical imaging systems, wearable devices, and genomic studies. Traditional healthcare methods often struggle to process and interpret these complex datasets efficiently. As a result, healthcare organizations face challenges related to delayed diagnoses, human errors, rising healthcare costs, and inefficient resource management. AI technologies such as machine learning and deep learning provide advanced computational capabilities to analyze healthcare data rapidly and accurately.

AI-powered systems have demonstrated remarkable success in medical diagnostics. Deep learning algorithms can analyze medical images including X-rays, CT scans, MRI scans, and pathology slides to identify diseases with high accuracy. AI-assisted diagnostics are widely used in radiology, oncology, cardiology, dermatology, and

neurology. These systems support healthcare professionals by improving disease detection, reducing diagnostic errors, and enhancing clinical decision-making.

Another major area of healthcare innovation involves AI-powered patient care systems. Virtual health assistants, telemedicine platforms, and wearable health monitoring devices provide continuous healthcare support and improve patient engagement. AI systems enable remote patient monitoring by analyzing real-time health data such as heart rate, glucose levels, blood pressure, and oxygen saturation. This technology is particularly beneficial for chronic disease management and elderly patient care.

AI is also revolutionizing personalized medicine by analyzing patient-specific clinical and genetic information to recommend customized treatment plans. Precision medicine improves treatment effectiveness and reduces adverse side effects. Furthermore, AI-assisted robotic surgeries improve surgical precision, minimize complications, and enhance recovery outcomes. Pharmaceutical companies are increasingly using AI to accelerate drug discovery and clinical trial analysis, reducing development costs and improving efficiency.

Despite its numerous benefits, AI adoption in healthcare also presents several challenges. Data privacy, cybersecurity, algorithmic bias, ethical concerns, and lack of transparency remain major issues. Healthcare organizations must ensure that AI systems comply with legal and ethical standards while protecting sensitive patient information. Human oversight remains essential because AI technologies should complement healthcare professionals rather than replace clinical expertise and empathy.

The future of medicine is expected to become increasingly dependent on AI-driven innovation. Emerging technologies such as intelligent healthcare ecosystems, digital therapeutics, predictive healthcare analytics, and smart hospitals will continue to reshape healthcare delivery. Governments, healthcare providers, researchers, and technology companies worldwide are investing heavily in AI infrastructure and healthcare innovation. Overall, AI has the potential to transform healthcare systems by making medical services more accurate, efficient, personalized, and accessible for global populations.

### 1.1 Research Objectives

The main objectives of this research are:

- To examine the role of Artificial Intelligence in healthcare innovation.
- To analyze AI applications in diagnostics, treatment planning, and patient care.
- To evaluate the benefits and challenges associated with AI-powered healthcare systems.
- To study case studies demonstrating AI implementation in healthcare environments.
- To identify future opportunities and trends in AI-driven medicine.

### 1.2 Problem Statement

The healthcare industry faces multiple challenges related to increasing patient populations, rising healthcare costs, shortage of healthcare professionals, and the growing complexity of disease diagnosis and treatment. Traditional healthcare systems rely heavily on manual data analysis and human expertise, which often results in delayed diagnoses, medical errors, and inefficient healthcare delivery. The rapid growth of healthcare data generated through electronic health records, wearable devices, medical imaging systems, and genomic research has made it difficult for conventional systems to process information effectively.

One major problem is diagnostic inaccuracy. Early detection of diseases such as cancer, cardiovascular disorders, diabetes, and neurological conditions is essential for successful treatment and improved patient outcomes. However, traditional diagnostic methods may fail to identify diseases at early stages due to limitations in human interpretation and clinical workload pressures. In addition, healthcare providers face challenges in delivering personalized treatment plans tailored to individual patient conditions and genetic profiles.

Healthcare accessibility is another critical issue, particularly in rural and underserved regions where specialized medical services are limited. Patients often experience delays in receiving consultations and treatments, resulting in poor healthcare outcomes. Healthcare organizations also struggle with administrative inefficiencies, resource allocation, and patient monitoring.

Artificial Intelligence offers potential solutions to these problems by enabling automated diagnostics, predictive analytics, remote patient monitoring, personalized medicine, and intelligent healthcare management systems. However, AI implementation introduces concerns related to data privacy, cybersecurity, ethical governance, transparency, and algorithmic bias. Therefore, there is a need to investigate how AI-powered healthcare innovation can improve medical services while addressing associated ethical, technical, and operational challenges.

## 2. AI Technologies Driving Healthcare Innovation

AI technologies used in healthcare include machine learning, deep learning, natural language processing, robotics, computer vision, and predictive analytics. These technologies enable healthcare systems to analyze large datasets, recognize patterns, and support clinical decision-making.

Machine learning models are commonly used for disease prediction, patient risk assessment, and treatment optimization. Deep learning algorithms are particularly effective in medical imaging analysis and speech

recognition. Natural language processing helps extract valuable information from clinical notes and medical reports. Robotics integrated with AI improves surgical precision and operational efficiency. AI innovation is also expanding into personalized medicine, where genomic and clinical data are analyzed to create customized treatment plans. Multimodal AI systems that combine imaging, laboratory, and genomic data are expected to improve diagnostic accuracy further.

### 3. AI Applications in Modern Medicine

#### 3.1 AI in Medical Diagnostics

AI-assisted diagnostic systems analyze medical images, pathology slides, and laboratory reports to identify diseases more accurately. AI has shown significant success in radiology, oncology, dermatology, and cardiology.

#### 3.2 Personalized Medicine

AI supports precision medicine by analyzing patient-specific data to recommend individualized treatments and predict drug responses.

#### 3.3 AI in Telemedicine

Telemedicine platforms integrated with AI provide remote consultations, automated symptom analysis, and virtual healthcare assistance.

#### 3.4 AI in Drug Discovery

AI accelerates pharmaceutical research by predicting molecular interactions, reducing drug development time, and identifying potential treatments efficiently.

#### 3.5 AI-Powered Robotic Surgery

AI-assisted robotic systems improve surgical accuracy, minimize complications, and enhance patient recovery rates.

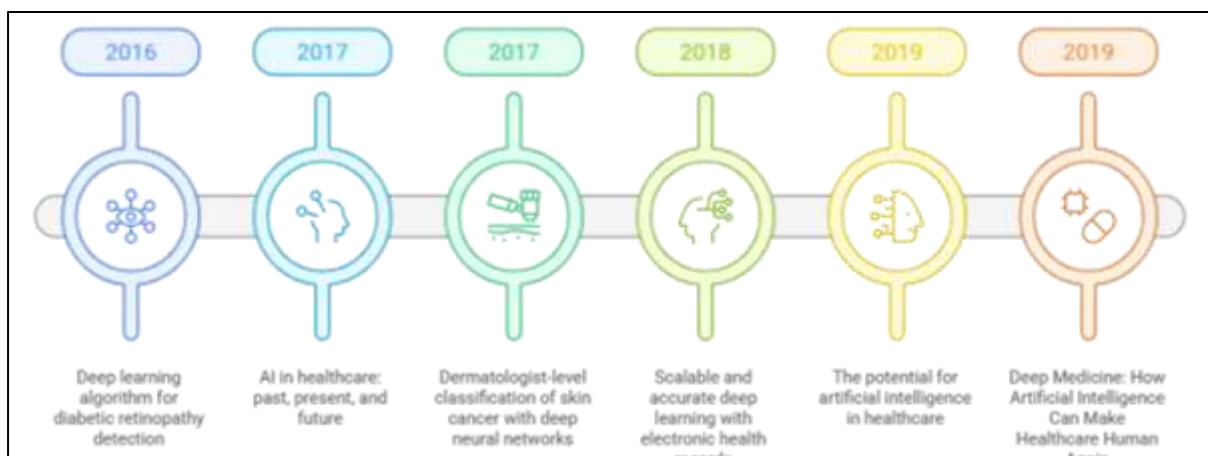


Figure 1: AI's Transformative Journey in Healthcare

## 4. RESULTS AND ANALYSIS WITH CODE EXAMPLE

The implementation of Artificial Intelligence in healthcare has demonstrated significant improvements in diagnostic accuracy, predictive healthcare, patient monitoring, and operational efficiency. AI-powered systems are capable of processing large healthcare datasets and identifying patterns that may not be easily recognized through traditional clinical methods. Machine learning algorithms are increasingly used in disease prediction, medical imaging analysis, and healthcare decision support systems.

One important application of AI in healthcare is predictive disease diagnosis. Machine learning models analyze patient health data such as age, blood pressure, glucose levels, cholesterol, and medical history to predict disease risks. Algorithms including Random Forest, Decision Trees, Support Vector Machines, and Neural Networks are widely used for healthcare analytics.

The following Python code demonstrates a simple AI-based disease prediction model using the Random Forest algorithm:

```
import pandas as pd
from sklearn.model_selection import train_test_split
from sklearn.ensemble import RandomForestClassifier
from sklearn.metrics import accuracy_score

# Sample healthcare dataset
data = {
'Age': [25, 45, 50, 30, 60, 35, 40, 55],
'BloodPressure': [120, 145, 150, 110, 165, 130, 140, 155],
```

```
'Glucose': [85, 140, 180, 90, 190, 110, 150, 175],  
'Disease': [0, 1, 1, 0, 1, 0, 1, 1]  
}
```

```
df = pd.DataFrame(data)  
  
# Features and target variable  
X = df[['Age', 'BloodPressure', 'Glucose']]  
y = df['Disease']  
  
# Split dataset  
X_train, X_test, y_train, y_test = train_test_split(  
X, y, test_size=0.2, random_state=42  
)  
  
# Train AI model  
model = RandomForestClassifier()  
model.fit(X_train, y_train)  
  
# Predictions5  
predictions = model.predict(X_test)  
  
# Model accuracy  
accuracy = accuracy_score(y_test, predictions)  
print("Accuracy:", accuracy)
```

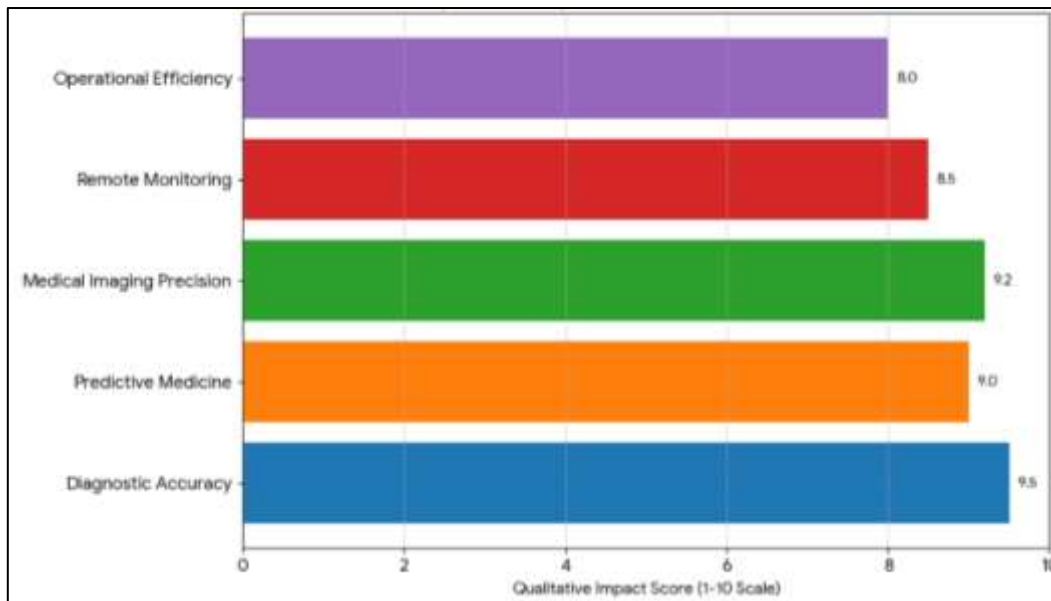


Figure 2: Impact of AI Implementation in Healthcare Areas

This machine learning model predicts whether a patient is likely to develop a disease based on healthcare parameters. AI-powered predictive systems help clinicians identify high-risk patients and support preventive healthcare strategies.

$$P(y = 1 | x) = \frac{1}{1 + e^{-(w_1x_1 + w_2x_2 + b)}}$$

The above logistic regression equation represents a common predictive model used in healthcare analytics for binary disease classification.

AI-assisted medical imaging systems have also shown remarkable performance in detecting diseases such as cancer, pneumonia, fractures, and neurological disorders. Deep learning algorithms trained on large medical imaging datasets can identify abnormalities with high precision. Hospitals using AI-assisted radiology systems report reduced diagnostic time and improved workflow efficiency.

Remote patient monitoring systems integrated with AI technologies enable continuous tracking of patient health conditions using wearable devices and IoT sensors. These systems analyze real-time patient data and provide

alerts for potential medical emergencies, reducing hospital readmissions and improving chronic disease management.

The analysis indicates that AI technologies significantly improve healthcare diagnostics, predictive medicine, and patient care efficiency. However, successful AI implementation depends on high-quality healthcare data, ethical governance, clinical validation, and collaboration between healthcare professionals and technology developers.

## 5. DISCUSSION

Artificial Intelligence is playing a transformative role in shaping the future of medicine and healthcare innovation. The analysis of AI-powered healthcare systems demonstrates that machine learning, deep learning, predictive analytics, and intelligent automation significantly improve diagnostics, treatment planning, patient monitoring, and healthcare management. AI technologies provide healthcare professionals with advanced tools capable of analyzing large volumes of medical data rapidly and accurately.

One of the most significant contributions of AI in healthcare is improved diagnostic accuracy. AI-assisted medical imaging systems can identify abnormalities in X-rays, CT scans, MRI scans, and pathology reports with high precision. Deep learning models are particularly effective in detecting diseases such as cancer, cardiovascular disorders, neurological diseases, and diabetic retinopathy. These systems reduce diagnostic errors, improve clinical efficiency, and support early disease detection, leading to better patient outcomes.

AI-powered predictive analytics also contributes to preventive healthcare. Machine learning algorithms analyze patient history, laboratory results, and lifestyle data to identify disease risks before symptoms become severe. Healthcare providers can use predictive insights to implement preventive interventions and personalized treatment plans. Precision medicine supported by AI allows treatments to be customized according to patient-specific clinical and genetic information, improving treatment effectiveness while minimizing side effects.

Another major advantage of AI is improved healthcare accessibility through telemedicine and remote patient monitoring systems. Virtual healthcare platforms integrated with AI provide remote consultations, automated symptom analysis, and patient assistance services. Wearable devices and IoT-based healthcare systems continuously monitor patient health conditions in real time, allowing early intervention and reducing hospital admissions. These technologies are especially valuable for elderly patients, chronic disease management, and rural healthcare delivery.

Despite these benefits, AI implementation in healthcare presents several challenges. Data privacy and cybersecurity concerns remain major issues because healthcare systems store highly sensitive patient information. AI systems also face risks related to algorithmic bias if training datasets are incomplete or unrepresentative. Biased AI predictions may lead to unequal healthcare outcomes and reduced reliability.

Transparency and explainability are also important challenges. Many AI models operate as “black box” systems, making it difficult for clinicians to understand how decisions are generated. Healthcare organizations must ensure that AI systems remain transparent, clinically validated, and ethically governed. Regulatory compliance and legal accountability are equally important for safe AI deployment in healthcare environments.

The future of AI-driven medicine is highly promising. Emerging technologies such as robotic surgery, intelligent healthcare ecosystems, digital therapeutics, and AI-assisted genomics are expected to further revolutionize healthcare delivery. Continued investment in AI research, healthcare infrastructure, and ethical governance will be essential for maximizing the benefits of healthcare innovation while ensuring patient safety and public trust.

Feature	Traditional Medicine	AI-Driven Medicine
<b>Diagnosis Speed</b>	Slower manual diagnosis	Faster automated analysis
<b>Accuracy</b>	Human-dependent	Data-driven precision
<b>Patient Monitoring</b>	Periodic monitoring	Continuous real-time monitoring
<b>Treatment Planning</b>	Generalized treatment	Personalized treatment
<b>Healthcare Access</b>	Limited by location	Remote digital healthcare
<b>Workflow Management</b>	Manual processes	Automated optimization
<b>Drug Discovery</b>	Time-consuming	Accelerated AI-assisted research
<b>Surgical Procedures</b>	Conventional surgery	AI-assisted robotic surgery

## 6. CONCLUSION

Artificial Intelligence has become one of the most transformative technologies shaping the future of medicine and healthcare innovation. AI-powered healthcare systems improve diagnostics, patient monitoring, predictive healthcare, treatment planning, and operational efficiency. Technologies such as machine learning, deep learning, natural language processing, robotics, and predictive analytics enable healthcare professionals to process large volumes of medical data accurately and efficiently, supporting better clinical decision-making and improved patient outcomes.

The findings of this research demonstrate that AI-assisted diagnostics significantly improve disease detection accuracy and reduce human error. AI-based medical imaging systems can identify conditions such as cancer, cardiovascular disorders, neurological diseases, and diabetic retinopathy at earlier stages, enabling timely intervention and better treatment outcomes. Predictive analytics models also support preventive healthcare strategies by identifying high-risk patients and assisting healthcare providers in developing personalized treatment plans.

AI-powered patient care technologies including telemedicine platforms, wearable health devices, virtual assistants, and remote monitoring systems have improved healthcare accessibility and patient engagement. These technologies provide continuous healthcare support, especially for patients in remote and underserved areas. AI-assisted robotic surgeries and personalized medicine approaches further enhance treatment precision and healthcare quality.

Despite these advantages, AI implementation in healthcare also presents important ethical, technical, and regulatory challenges. Concerns related to data privacy, cybersecurity, transparency, algorithmic bias, and legal accountability must be addressed to ensure responsible AI adoption. Human oversight remains essential because AI systems are designed to support healthcare professionals rather than replace medical expertise and empathy.

The future of medicine is expected to become increasingly dependent on AI-driven innovation. Emerging technologies such as intelligent healthcare ecosystems, precision medicine, digital therapeutics, and AI-assisted genomics will continue to reshape healthcare delivery systems. Continued investment in AI research, healthcare infrastructure, interdisciplinary collaboration, and ethical governance will be essential for maximizing the benefits of AI-powered healthcare innovation. Overall, AI has the potential to revolutionize global healthcare by creating more efficient, accessible, personalized, and patient-centered medical services for future generations.

#### REFERENCES

- [1] Jiang, F., et al. "Artificial intelligence in healthcare: past, present and future." *Stroke and Vascular Neurology*, 2017.
- [2] Esteva, A., et al. "Dermatologist-level classification of skin cancer with deep neural networks." *Nature*, 2017.
- [3] Rajkomar, A., et al. "Scalable and accurate deep learning with electronic health records." *npj Digital Medicine*, 2018.
- [4] Gulshan, V., et al. "Development and validation of a deep learning algorithm for diabetic retinopathy detection." *JAMA*, 2016.
- [5] Topol, E. *Deep Medicine: How Artificial Intelligence Can Make Healthcare Human Again*. 2019.
- [6] Davenport, T., & Kalakota, R. "The potential for artificial intelligence in healthcare." *Future Healthcare Journal*, 2019.